



# A Shared Vision: Partners in Pediatric Blindness and Visual Impairment

## CONTENTS

EIN: 81-4227664  
Report Generated on: 10/31/2022

Executive Summary	2
Programs & Results	4
Financial Review	8
Operations & Leadership	10

## APPENDIX

Key Documents	19
Charity Check Report	20

# A Shared Vision: Partners in Pediatric Blindness and Visual Impairment



Platinum  
Transparency  
2022

Candid.

- aka A Shared Vision
- Westminster, CO
- www.ASharedVision.org
- (303)349-1961

[View GuideStar Profile](#)

## MISSION

A Shared Vision educates, inspires, and empowers families to nurture the development of their very young children who are blind or visually impaired so that all children may discover their brightest future.

## EIN

81-4227664

## RULING YEAR

2017

## IRS SUBSECTION

501(c)(3) Public Charity

## FOUNDING YEAR

2016

## MAIN ADDRESS

10135 West 101st. Drive  
Westminster, CO  
80021

## AFFILIATION TYPE

Independent Organization

## CONTACT

Steven Lindauer, Executive  
Director  
(303) 349-1961  
slindauer@ASharedVision.org

## EXECUTIVE DIRECTOR

Steven Lindauer

## BOARD CHAIR

Paula Landry

## SUBJECT AREA

Special needs education

Eye diseases

Special population support

## NTEE Code

Specialized Education  
Institutions/Schools for Visually  
or Hearing Impaired, Learning  
Disabled (B28)

## PROGRAMS

### 1. Early Intervention Vision Services Program

Population(s) served: Infants and toddlers, People with vision impairments, Caregivers, Families, Parents

### 2. Family Support Program

Population(s) served: Infants and toddlers, People with vision impairments, Caregivers, Families, Parents

### 3. Education Program

Population(s) served: Caregivers, Families, Parents, People with vision impairments, Infants and toddlers

## POPULATIONS SERVED

### 1. Children and youth

### 2. Infants and toddlers

### 3. Caregivers

### 4. People with vision impairments

## COMPLIANCE

- ✓ IRS Pub 78 Verified as of October 2022
- ✓ IRS BMF 509(a) (1) as of October 11, 2022
- ✗ A-133 Audit Required/Performed?
- ✓ Conflict of Interest Policy
- ✓ Written whistleblower policy

Section 509(a)(1) organization as referred to in Section 170(b)(1)(A)(vi)

## TRANSPARENCY MEASURES

- ✓ Board Practices Reported?
- ✓ Diversity Data Reported?
- 2 Number of Independent Board Members

# Programs & Results

## PROGRAMS

Source: Self-Reported by Organization,  
October 2022

### Early Intervention Vision Services Program

#### Population(s) Served:

Infants to preschool (under age 5)  
People with vision impairments

Through our Early Intervention Vision Services Program, our teachers provide direct early intervention vision services to families and young children, birth to age three, throughout metro Denver, Boulder and Fort Collins as well as in 84% of Colorado's rural counties. The services are defined by the families' Individualized Family Service Plans (IFSPs) developed in conjunction with A Shared Vision, CCB service coordinators and other early intervention providers. This program supports the principles and research-based best practices of early intervention by providing education and support in families' homes and in community settings. The goal is a positive trajectory for cognitive, social and emotional development of very young children with visual impairments. Our teachers address all the senses that enable early learning to occur in a very young child with a visual impairment.

We determine our overall success by the number of children we serve, the number of trainings we facilitate and feedback from our families and partner organizations. In 2019 more than 200 families received 2,241 service visits from our EI-TVIs – an increase of 38% in visits from the prior year. That's more than ten times the number of vision services provided any other center-based organization or provider group. In 2020 the number of families served increased more than 5% despite the challenges of providing services during a pandemic.

### Family Support Program

#### Population(s) Served:

Infants to preschool (under age 5)  
Caregivers

Through our Family Support Program, A Shared Vision provides education, community connections and support for families of children with visual impairments through group activities (either virtual or in person), the newsletter, website and social media. The goals are positive mental health and improved capabilities of the caregivers in service of their children with visual impairments.

Our Annual Caregiver Questionnaire, a survey that allows us to gauge the strengths and weaknesses of our services, is given to all families we serve. For two years in a row, our families overwhelmingly felt that their needs and their children's were met, the frequency and schedule of visits were appropriate and convenient, and the education and coaching provided were beneficial. This survey has also guided our Family Support programming, including the development of more fun, sensory experiences families can do with their child while staying safe at home during the pandemic.

### Education Program

#### Population(s) Served:

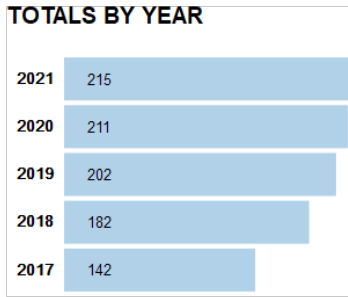
Infants to preschool (under age 5)  
Caregivers

Our Education Program builds the community of highly skilled and collaborative professionals who serve very young children with blindness or visual impairments. The goals are to: (i) increase awareness of unserved/underserved children with visual impairments towards identification of all very young children with visual impairments; and (ii) to improve the collaboration and transdisciplinary teaming of all early intervention providers towards better outcomes for children, birth to age three, who are blind or visually impaired.

Experts in Colorado's early intervention programs believe that many children with visual impairments remain unidentified because of insufficient screening and a lack of qualified vision providers. During the pandemic, in cooperation with Early Intervention Colorado, we conducted vision screening trainings via telehealth for nearly 700 EI providers, service coordinators and Head Start and Child Find teams. Now more than half of them are qualified to use the tool to identify via telehealth very young children with vision concerns and refer the family to a pediatric eye doctor and an EI-TVI.

## RESULTS

### Number of families served

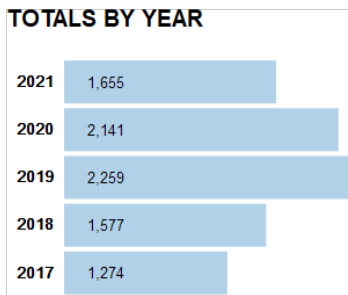


**Population(s) Served:** No target populations selected

**Related program:** Early Intervention Vision Services Program

**Notes:** COVID-19 pandemic (2020) caused statewide decline in number of children referred to early intervention. Vision screening training provided by A Shared Vision identified additional children in need.

### Number of EI vision services provided to families



**Population(s) Served:** No target populations selected

**Related program:** Early Intervention Vision Services Program

**Notes:** COVID-19 pandemic (2020) affected our families served. Because of the shift from in-person to telehealth services, many families reduced the frequency of services for their children.

---

## CHARTING IMPACT

---

### What is the organization aiming to accomplish?

Our mission is to inspire and empower families to nurture the development of their very young children who are blind or visually impaired so that all children may discover their brightest future. Our goal is that all families of children with visual impairments have access to and receive essential early intervention services from a community of highly skilled and collaborative professionals. This includes providing direct services to families and young children with visual impairments throughout the state; identifying additional families that need vision services because these children were historically overlooked; and expanding the collective capabilities within the state to serve families and children with visual impairments through active collaboration and training.

---

### What are the organization's key strategies for making this happen?

We partner with 16 of Colorado's 20 Community Centered Boards (CCBs) representing 84% of the state's population. The CCBs provide case management services to families with disabilities, including young children with blindness and visual impairments.

Our services are family-focused, strengths-based and developmentally appropriate. Our teachers begin by helping families understand their child's specific visual diagnosis and the effect it will have on early learning. They teach caregivers strategies for interacting with their child and how to provide a variety of multi-sensory learning experiences for a child to gain access to the visual world. They model how children learn through play so families understand how to incorporate learning into everyday routines. They foster emergent literacy through singing songs, storytelling, exposure to print, braille and other pre-reading activities. When a child turns three, our EI-TVIs assist families through the transition process from Early Intervention (Part C IDEA) to school-based programming (Part B IDEA). Our teachers also conduct functional vision and sensory assessments, attend IFSP meetings and accompany families on ophthalmology appointments.

To build the community of highly skilled and collaborative professionals serving children with visual impairments, we provide trainings throughout the year on many vision-related topics for other EI providers, CCB service coordinators, optometrists, pediatricians and their staff, as well as Child Find and Head Start teams. Our focus in 2020 was vision screening training via telehealth.

---

### What are the organization's capabilities for doing this?

Our team of 17 Early Intervention Teachers of the Visually Impaired average more than ten years of experience in supporting children with blindness or visual impairments. Several of them also hold full-time TVI positions in Colorado's public school districts.

Testimonials reflect our relationships and impact. From a senior member of the EI Colorado State Team, Colorado Department of Human Services, "A Shared Vision stepped in when there was a real chance that children in early intervention (EI) would go without home-based vision services. Not only did they fill that gap, their staff fully embraced the EI philosophy of building the family's capacity to support their child through coaching and truly listening to and addressing family concerns. They strive to be great EI providers and they are!"

---

### What have and haven't they accomplished so far?

A Shared Vision has become the leading provider early intervention vision services in Colorado. We partner with Early Intervention Colorado and 16 of Colorado's 20 Community Centered Boards (CCBs). Through these partnerships, we support 55 counties along the Front Range, the southeast, northeast and the Western Slope, representing 84% of the state's population.

In 2021 more than 215 families received 1,655 service visits from our licensed EI-TVIs. That is more than ten times the number of vision services provided by any other center-based organization or EI provider group. To meet the growing demand for services, we have nearly tripled the number of EI-TVIs on our team, from five to 17.

As an organization we secured a communications manager to increase our visibility with families, channel partners and donors throughout the state. We formed a six-member Board as well as an Advisory Team that includes influential professionals from the Colorado Department of Education, Colorado Department of Human Services, Children Eye Physicians and UCHealth.

In 2021 we supported the Western Regional Early Intervention Conference which supports professionals working with, and families of, children birth to five years who are deaf/hard of hearing, blind/visually impaired or deafblind. WREIC is the premier early intervention conference in the country.

A Shared Vision has been able to grow through our passionate donors who recognize the value early intervention brings to Colorado families. Major donors include the Anschutz Family Foundation, the Buell Foundation, the James Hynd Trust, the Gibney Family Foundation, and the Gerald Erikson Trust of the Pikes Peak Foundation. We have also participated in Colorado Gives Day since 2017.

Just as we anticipate the demand for services to increase because of improved statewide vision screening, we also anticipate a shortage of licensed EI-TVIs due to the lack of competitive compensation and the aging teacher community. We are focused on building bridges and establishing strong working relationships with other nonprofits and state entities that provide direct services to families with disabilities. Our planning and execution must remain focused on our mission, on what is best for our children and families. As with every young organization, we have to work toward a sustainable future.

# Financials

FISCAL YEAR START: 01/01

FISCAL YEAR END: 12/31

## Financial Trends Analysis

### Business Model Indicators

Created in Partnership with



Profitability	2018	2019	2020
Unrestricted surplus (deficit) before depreciation	\$25,237	\$1,209	\$4,434
As a % of expenses	13.8%	0.4%	1.4%
Unrestricted surplus (deficit) after depreciation	\$25,237	\$1,209	\$4,434
As a % of expenses	13.8%	0.4%	1.4%

### Revenue Composition

Total revenue (unrestricted & restricted)	\$205,267	\$306,665	\$316,575
Total revenue, % change over prior year	0.0%	49.4%	3.2%
Program services revenue	70.8%	73.2%	67.3%
Membership dues	0.0%	0.0%	0.0%
Investment income	0.0%	0.0%	0.0%
Government grants	0.0%	0.0%	3.2%
All other grants and contributions	29.2%	26.8%	29.6%
Other revenue	0.0%	0.0%	0.0%

### Expense Composition

Total expenses before depreciation	\$183,388	\$305,456	\$312,141
Total expenses, % change over prior year	0.0%	66.6%	2.2%
Personnel	84.1%	84.5%	89.0%
Professional Fees	0.1%	0.0%	0.0%
Occupancy	0.0%	0.0%	0.0%
Interest	0.0%	1.1%	0.0%
Pass-Through	0.0%	0.0%	0.0%
All other expenses	15.6%	14.3%	11.0%



# Financial Trends Analysis, continued

## Moving Toward Full Cost Coverage

Full Cost Components (estimated)	2018	2019	2020
Total Expenses (after depreciation)	\$183,388	\$305,456	\$312,141
One Month of Savings	\$15,282	\$25,455	\$26,012
Debt Principal Repayment	\$0	\$0	\$0
Fixed Asset Additions	\$0	\$0	\$0
Total Full Costs (estimated)	\$198,670	\$330,911	\$338,153

## Capital Structure Indicators

### Liquidity

Months of cash	2.0	1.2	3.5
Months of cash and investments	2.0	1.2	3.5
Months of estimated liquid unrestricted net assets	2.0	1.0	1.2

### Balance Sheet Composition

Cash	\$31,276	\$31,477	\$91,182
Investments	\$0	\$0	\$0
Receivables	\$0	\$0	\$0
Gross land, buildings, and equipment (LBE)	\$0	\$0	\$0
Accumulated depreciation (% of LBE)	0.0%	0.0%	0.0%
Liabilities (as % of assets)	20.3%	17.0%	66.5%
Unrestricted net assets	\$0	\$0	\$0
Temporarily restricted net assets	\$0	N/A	N/A
Permanently restricted net assets	\$0	N/A	N/A
Total restricted net assets	\$0	\$0	\$0
Total net assets	\$31,276	\$26,122	\$30,557

## Key Data Checks

Material Data Errors	2018	2019	2020
	Yes	No	No

Note: This issue is relevant to a small number of organizations: The nonprofit subject(s) of this report may have affiliates. The Form 990 data may not include information about any or all potential affiliates. If an organization does have affiliates and these affiliates have substantial financial activity, the financial data in this report may not present a comprehensive picture of the nonprofit's financial condition. Please consult the 990s of any potentially related affiliates for additional information.

- [Formulas for key metrics](#)
- ['Key Revenue & Expense Data from Form 990'](#)
- ['Key Balance Sheet Data from Form 990'](#)

# Operations

Source: Self-Reported by Organization, October 2022

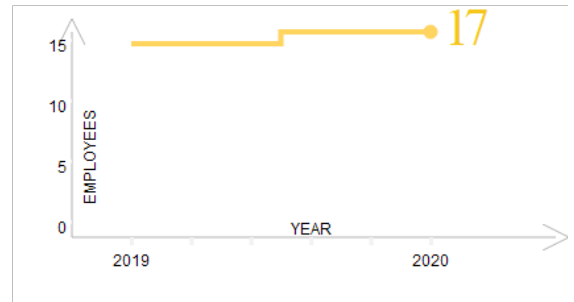
## EXECUTIVE DIRECTOR

Steven Lindauer

Steven Lindauer has over thirty years of leadership experience with both for-profit and nonprofit organizations. During his career he has served as an operational leader and consultant to businesses from start-ups to diversified, international Fortune 500 enterprises. His professional capabilities were honed through experiences as a leader in a top-10 global consulting firm, operating executive at public companies and entrepreneur within large organizations. Mr. Lindauer is passionate about serving Colorado's youngest children who are blind, visually impaired or have vision concerns and their careivers.

## NUMBER OF EMPLOYEES

Source: IRS Form 990



## BOARD CHAIR

Paula Landry

A Shared Vision

Term: 2021 - 2022

## BOARD MEMBERS

Paula Landry

A Shared Vision

Steven Lindauer

A Shared Vision

Kivanc Ozer

Susan Raymond

## OFFICERS, DIRECTORS, TRUSTEES, AND KEY EMPLOYEES

FISCAL YEAR 2020

Name	Title	Compensation	Other	Related
Steven Lindauer	Executive Director	\$37,000	\$0	\$0
Paula Landry	EI Teacher of the Visually Impaired	\$25,778	\$0	\$0
Stefanie Hamilton	EI Teacher of the Visually Impaired	\$2,322	\$0	\$0
Susan Raymond	Board member	\$0	\$0	\$0
Kivanc Ozer	Board member	\$0	\$0	\$0

## OFFICERS, DIRECTORS, TRUSTEES, AND KEY EMPLOYEES

FISCAL YEAR 2019

Name	Title	Compensation	Other	Related
Steven Lindauer	EXECUTIVE DIRECTOR	\$33,000	\$0	\$0
Paula Landry	TEACHER OF THE VISUALLY IMPAIRED	\$17,830	\$0	\$0
Stefanie Hamilton	TEACHER OF THE VISUALLY IMPAIRED	\$8,780	\$0	\$0

## OFFICERS, DIRECTORS, TRUSTEES, AND KEY EMPLOYEES

FISCAL YEAR 2018

Name	Title	Compensation	Other	Related
Paula Landry	Teacher of the Visually Impaired	\$23,073	\$0	\$0
Stefanie Hamilton	Teacher of the Visually Impaired	\$5,323	\$0	\$0
Steven Lindauer	Executive Director	\$3,452	\$0	\$0

## Officers Directors, Trustees, Key Employees

FISCAL YEAR 2017

Name	Title	Compensation	Benefits/Deferred Compensation	Expense Account, Other
Stefanie Hamilton	Pediatric Visual Impairment Specialist	\$24,675	\$0	\$0
Paula Landry	Pediatric Visual Impairment Specialist	\$21,963	\$0	\$0
Steven Lindauer	Executive Director	\$1	\$0	\$0

## Paid Preparers

FISCAL YEAR 2019

---

Firm Name	Firm EIN	Firm Address	Firm Phone
CAMPBELL & COMPANY	26-3632365	12200 E BRIARWOOD AVE SUITE 150, CENTENNIAL CO 80112 USA	303-621-0143

---

## BOARD LEADERSHIP PRACTICES

GuideStar worked with BoardSource, the national leader in nonprofit board leadership and governance, to create this section, which enables organizations and donors to transparently share information about essential board leadership practices.

---

### BOARD ORIENTATION & EDUCATION

Does the board conduct a formal orientation for new board members and require all board members to sign a written agreement regarding their roles, responsibilities, and expectations? Yes

---

### CEO OVERSIGHT

Has the board conducted a formal, written assessment of the chief executive within the past year? Yes

---

### ETHICS & TRANSPARENCY

Have the board and senior staff reviewed the conflict-of-interest policy and completed and signed disclosure statements in the past year? Yes

---

### BOARD COMPOSITION

Does the board ensure an inclusive board member recruitment process that results in diversity of thought and leadership? Yes

---

### BOARD PERFORMANCE

Has the board conducted a formal, written self-assessment of its performance within the past three years? Yes



## Organizational Demographics

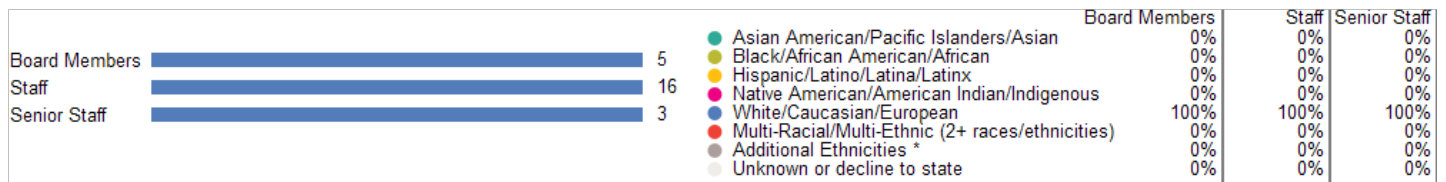
Who works and leads organizations that serve our diverse communities? This organization has voluntarily shared information to answer this important question and to support sector-wide learning. GuideStar partnered on this section with CHANGE Philanthropy and Equity in the Center.

### Leadership

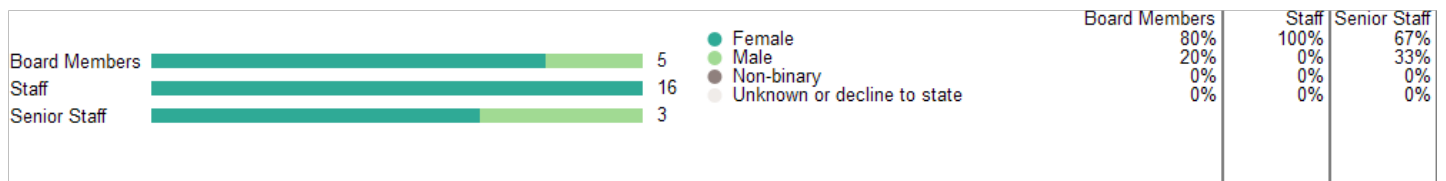
The organization's leader identifies as:

Race & Ethnicity	White/Caucasian/European
Gender Identity	Male
Sexual Orientation	Decline to state
Disability Status	Person without a disability

### Race & Ethnicity



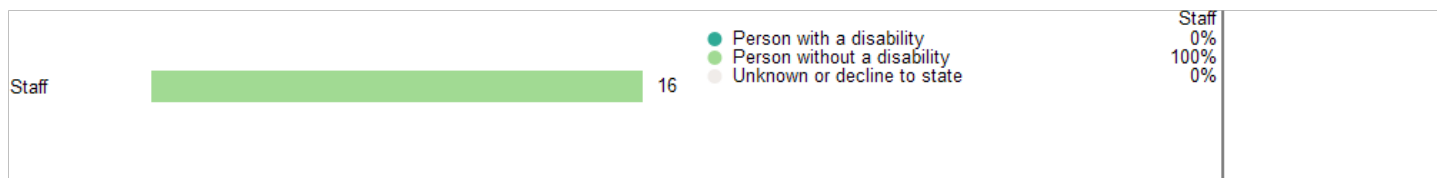
### Gender Identity



### Sexual Orientation

No data

### Disability



**Equity Strategies** *Last Updated: 02/17/2021*

Candid partnered with Equity in the Center - a project that works to shift mindsets, practices, and systems within the social sector to increase racial equity - to create this section. [Learn More](#)

**Data**

✓ We employ non-traditional ways of gathering feedback on programs and trainings, which may include interviews, roundtables, and external reviews with/by community stakeholders.

✓ We have long-term strategic plans and measurable goals for creating a culture such that one's race identity has no influence on how they fare within the organization.

**Policies and processes**

✓ We have community representation at the board level, either on the board itself or through a community advisory board.

✓ We help senior leadership understand how to be inclusive leaders with learning approaches that emphasize reflection, iteration, and adaptability.

# Appendix

## Key Documents

IRS Forms 990

[2019 990](#)

[2018 990](#)

[2017 990](#)

[2016 990](#)

IRS Forms 990T

Not Available

Audited Financial Statements

Not Available

Key Organization Documents

[Letter of Determination](#)

[2020 Annual Report](#)

[2019 Annual Report](#)

['Key Revenue & Expense Data from Form 990'](#)

['Key Balance Sheet Data from Form 990'](#)

# GuideStar Charity Check

## A Shared Vision: Partners in Pediatric Blindness and Visual Impairment

Aka A Shared Vision

10135 West 101st. Drive  
Westminster, CO 80021

- ✓ Foundation Status Code: PC\*
- ✓ Public charity described in section 509(a)(1) or (2)

### IRS Publication 78 Details



Organization name	Location	Most recent IRS Publication 78
A Shared Vision Partners in Pediatric Blindness and Visual Imp	Broomfield, CO	October 2022
EIN	<u>Deductibility status description</u>	Verified with most recent Internal Revenue Bulletin
81-4227664	A public charity (50% deductibility limitation).	September 26, 2022

### IRS Business Master File Details



Organization name	Most recent IRS BMF	Reason for Non-Private Foundation Status
A SHARED VISION PARTNERS IN PEDIATRIC BLINDNESS AND VISUAL IMP	October 11 2022	Section 509(a)(1) organization as referred to in Section 170(b)(1)(A)(vi)
EIN	IRS subsection	Ruling date
81-4227664	This organization is a <u>501(c)(3) Public Charity</u>	04/2017
This organization was not included in the Office of Foreign Assets Control Specially Designated Nationals (SDN) list.		

On September 8, 2011, the IRS issued [regulations](#) which eliminated the advance ruling process for a section 501(c)(3) organization. [Learn more](#)

\* The Foundation Status Code is the code that foundations are required to provide for each grantee annually on part XV of Form 990PF. Note that this code cannot be derived in some cases (e.g., supporting organizations for which 'type' can't be determined).

[IRS Revenue Procedure 2011-33](#) allows grantors to rely on third-party resources, such as GuideStar Charity Check, to obtain required Business Master File (BMF) data concerning a potential grantee's public charity classification under section 509 (a) (1), (2) or (3).

#### GuideStar Charity Check Data Sources

-GuideStar acquires all IRS data directly from the Internal Revenue Service.

-[IRS Publication 78 \(Cumulative List of Organizations\)](#) lists organizations that have been recognized by the Internal Revenue Service as eligible to receive tax-deductible contributions.

-The [IRS Internal Revenue Bulletin \(IRB\)](#) lists changes in charitable status since the last Publication 78 release. Between the release of IRS Publication 78 and the subsequent IRS Internal Revenue Bulletin, the IRB date will reflect the most recent release date of IRS Publication 78.

-The [IRS Business Master File](#) lists approximately 1.7 million nonprofits registered with the IRS as tax-exempt organizations.

-The [IRS Automatic Revocation of Exemption List](#) contains organizations that have had their federal tax-exempt status automatically revoked for failing to file an annual return or notice with the IRS for three consecutive years.

-The Foundation Status Code is a value derived by mapping the codes found on the [990PF filing instructions](#) to the corresponding codes in the IRS BMF. Note that not all codes are able to be mapped due to insufficient data.

-The Office of Foreign Assets Control (OFAC) [Specially Designated Nationals \(SDN\) list](#) organizations that are owned or controlled by targeted individuals, groups, and entities, such as terrorists or narcotics traffickers. Their assets are blocked and U.S. persons are generally prohibited from dealing with them.